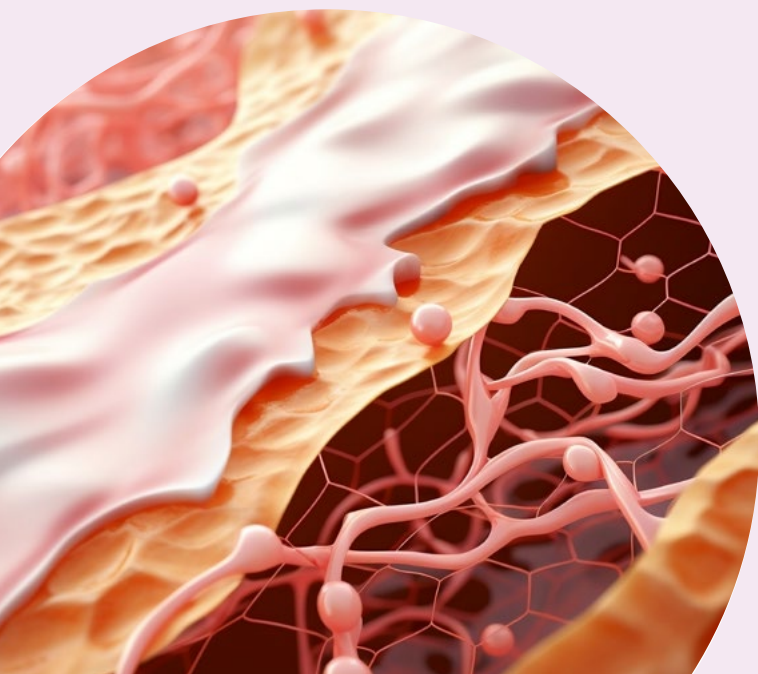


E-DELPHYN TIS

e-Delphyn TIS is a comprehensive software solution for the processes and activities of tissue donation to transplantation.

Features

- Donor entry
- Donor eligibility testing
- Tissue collection management
- Tissue processing, QC and labeling
- Tissue storage management
- Tissue distribution management
- Transplant and patient management





Architecture

e-Delphyn TIS is a fully web-based Java N-Tier architecture software solution allowing for an integral tissue management, from the donor and collected tissues to the final recipient and transplants.



Integration

e-Delphyn TIS is deployed with HL7, enabling easy integration with other systems such as HIS, LIS and/or any other electronic health records to provide real-time updates, which will save time and reduce errors.



Compliance

e-Delphyn fully supports the generation of ISBT 128 labels of collected tissues. Labels format can also be adapted to each Tissue Bank's needs.



Advantages

It optimizes the entire donation and analysis process to ensure that the tissue is as suitable as possible for the recipient.

